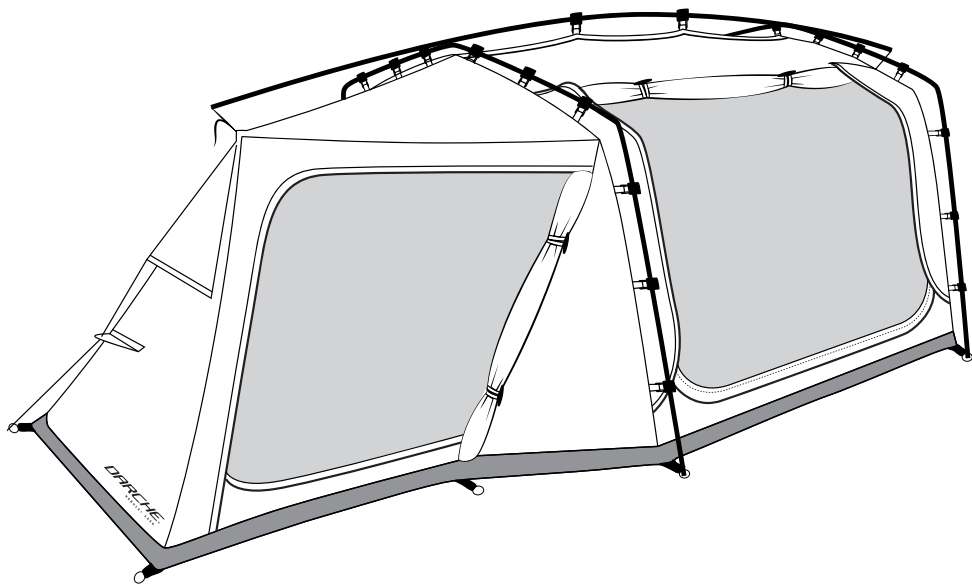


DARCHE[®]

**N E B U L A +
1 5 5 0 S W A G**

INSTRUCTION MANUAL



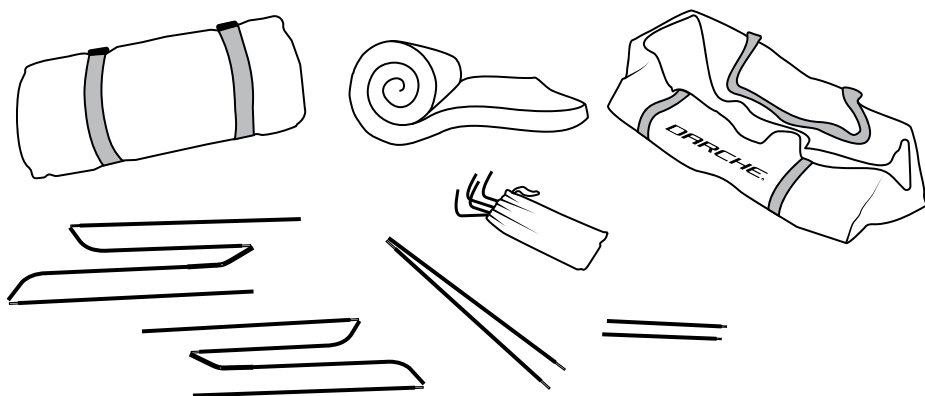
T050801206P

D A R C H E . C O M . A U

INSTRUCTION MANUAL

CONTENTS

- 1 x Nebula + swag
- 1 x Nebula + canvas swag bag
- 2 x Aluminium main body poles
- 1 x Aluminium ridge pole
- 2 x Aluminum end insert poles
- 1 x 70mm high-density foam mattress
- 11 x Pegs
- 2 x Guy ropes (1x spare)

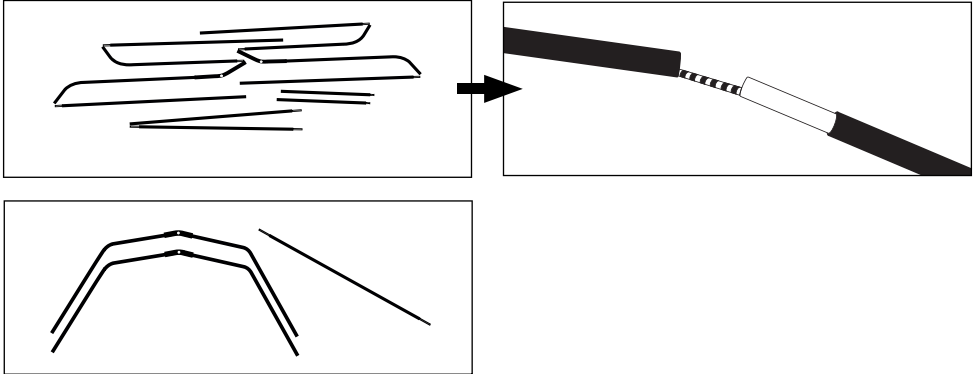


SCAN TO WATCH
THE VIDEO

PLEASE NOTE

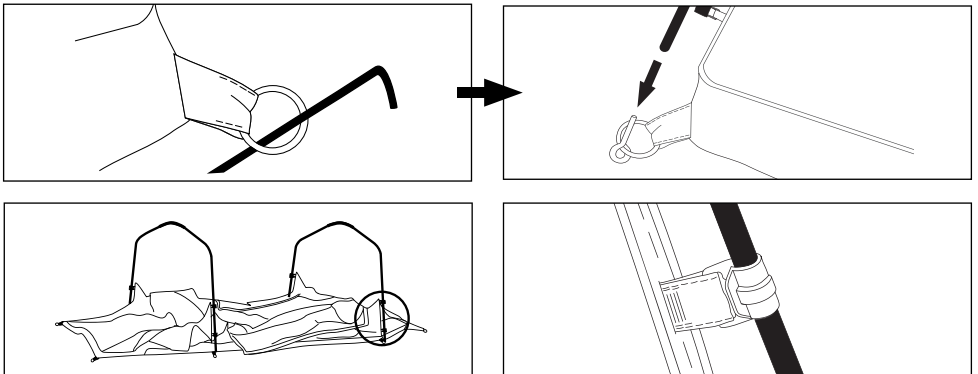
Prior to first use of the Nebula+ swag, it is important to remove the mattress from its compression sleeve and allow it to expand. Seasoning the swag is not essential but is recommended. For full instructions on seasoning your DARCHE swag, see How to Season Your Swag (page 7).

Step 1



Unroll the swag onto a flat, well-drained area free of sharp objects that may penetrate the swags PVC floor. Assemble the two aluminium body poles and the ridge pole.

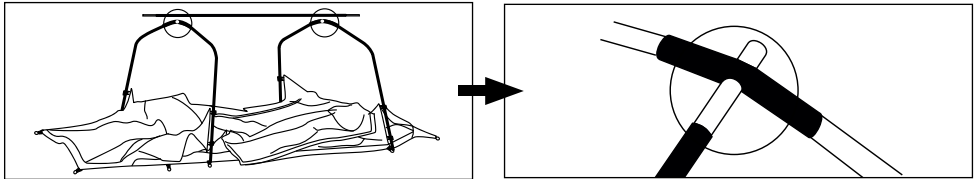
Step 2



Peg down the swag. Insert the pins into the aluminium body pole at each end then attach the first two bottom clips on each side. Repeat this for the other end.

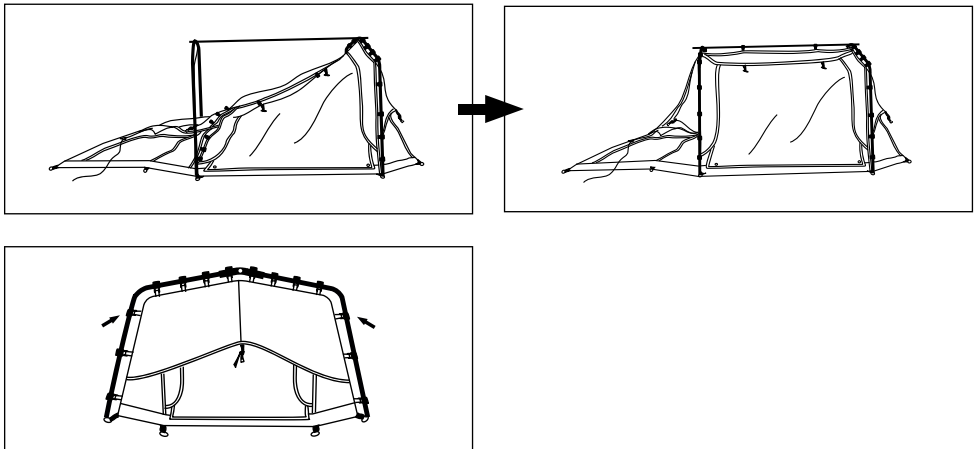
INSTRUCTION MANUAL

Step 3



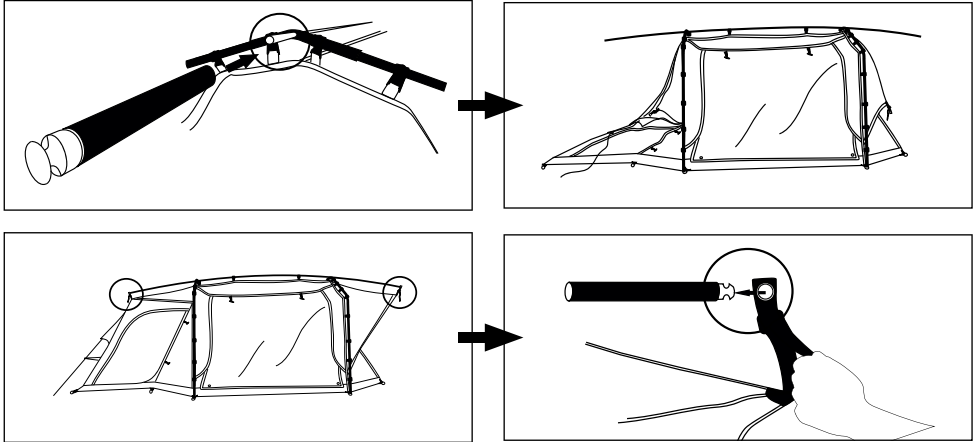
Slide the ridge pole through the body poles at each end.

Step 4



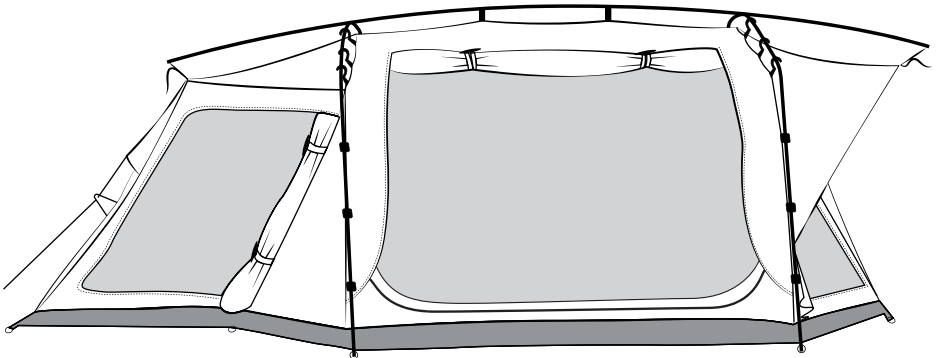
Attach the clips from the swag to the aluminium body frame on each side. Attach the clips from the swag to the centre ridge pole.

Step 5



Insert the end poles to both sides of the ridge pole. Place the tension strap onto the end of the pole then tension the swag.

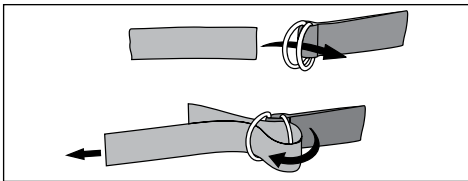
Peg out and tension the guy ropes as required. Your Nebula+ swag set up is now complete.



INSTRUCTION MANUAL

PACK DOWN

1. Partially close all the zips, door covers and window flaps, leaving them slightly open will allow for the air to escape while rolling up. Remove pegs and guy ropes if used.
2. Release the end tension straps and remove the end poles on each side of the swag.
3. Unclip the swag from the aluminium poles one end at a time. Unclip the swag from the centre ridge pole.
4. Disassemble all the poles in preparation for step 5 below.
5. While the swag is laid out flat, bring any overhanging canvas and ropes into the centre of the swag. Beginning from the Hutch end of the swag, fold the Hutch over onto the main body section then begin rolling up the swag. Roll the swag as tightly as possible to achieve a compact roll. Tip: Using your knees, or two people while rolling, will assist in getting the swag as compact as possible. Just before completing the rolling process, place all the disassembled poles between the fabric and continue rolling process to the end.
6. Bring the two compression straps together and loop through the double D-rings, do not over tighten the straps.



NOTE

Allow to fully dry out before re-packing and storing. Allow a wet or damp swag to dry thoroughly before pack down. If this is not possible, unroll swag as soon as possible.

SPARE PARTS LIST

For a full list of Spare Parts available refer to DARCHE.COM.AU

HOW TO SEASON YOUR DARCHE SWAG

The best way to season your swag is to set up outdoors and completely soak the exterior material of the swag with a hose. Allow the swag to dry completely. Repeat this process 2-3 times. Seasoning the swag will allow the canvas material to swell and will help to fill any stitching holes, providing an additional level of weather protection. Ensure the swag is completely dry before packing away.

CARE & STORAGE INSTRUCTIONS

1. Remove dirt with a soft brush and cold water after use.
2. Do not clean with soap, detergent, petrol, oil or solvents.
3. Ensure swag is completely dry before storing.
4. Do not store directly on concrete floors. A dry shelf in your shed or a cupboard is a perfect spot for your swag when not in use.
5. If spot mould is visible, brush it off with a stiff bristle nylon brush and vacuum the area to get rid of any residual spores.
6. Leaving your swag rolled too tightly for long periods of time may result in the mattress taking a while to bounce back. If it's been a while since your last adventure, open your swag a few days before you leave and allow the mattress to expand. Re-pack your swag and have a great weekend.

MOISTURE/CONDENSATION

Condensation is a natural occurrence in confined areas like swags/tents due to the body releasing more moisture than the canvas can dispose in cold weather. To minimise the chance of condensation, we recommend slightly opening the window to enable airflow on cold nights.

I N S T R U C T I O N M A N U A L

Designed and tested in Australia for Australian conditions.

A brand by Charles Parsons.

Telephone 1300 367 695 | Email: info@DARCHE.com.au

75 Heyington Avenue, Thomastown VIC 3074, Australia.

DARCHE: LEADERS IN OUTDOOR DESIGN. PROUDLY AUSTRALIAN.

Due to our policy of continual product development,
the specifications, colours and features may vary.

V1-July-2021



D A R C H E . C O M . A U