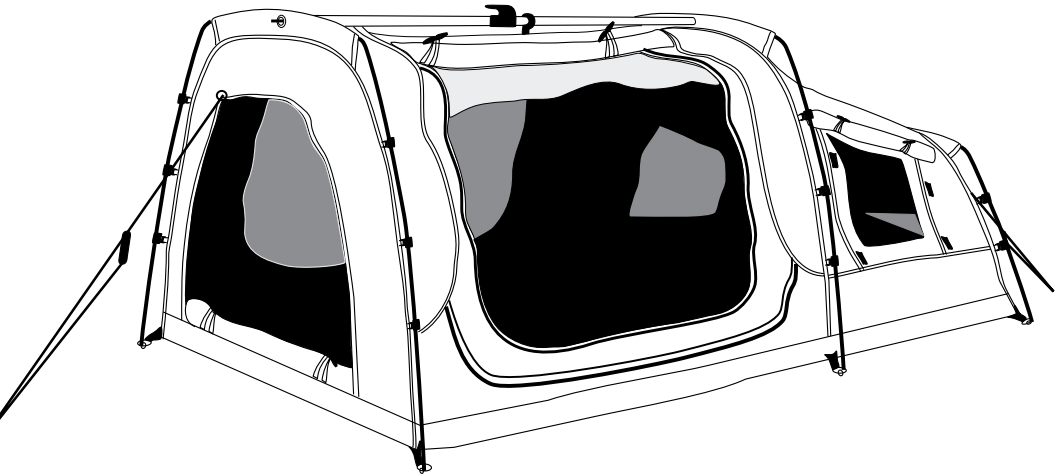




# OUTBACK SWAG

INSTRUCTION MANUAL



KSS1003  
KSS1004  
KSS1005

# I N S T R U C T I O N M A N U A L

## CONTENTS

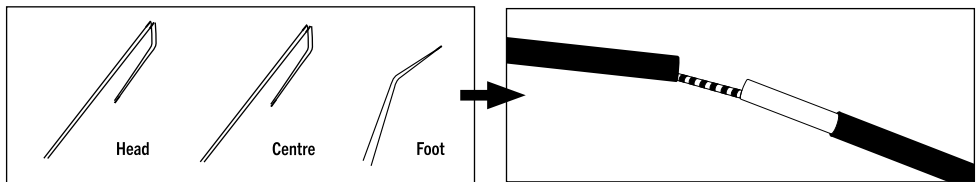
- 1 x Outback swag
- 3 x Aluminium swag poles
- 1 x Trigger lock spreader pole
- 1 x 50mm high-density foam mattress
- 8 x Pegs
- 3 x Guy ropes
- 1 x Aluminium pole repair sleeve

## PLEASE NOTE

Prior to first use of the Outback swag, it is important to remove the mattress from its compression sleeve and allow it to expand.

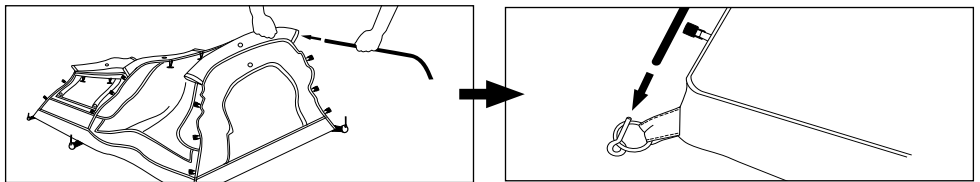
Seasoning the swag is not essential but is recommended. For full instructions on seasoning your DARCHE swag, see *How to Season Your Swag* (page 7).

### Step 1



Unroll the swag onto a flat, well-drained area free of sharp objects that may penetrate the swags PVC floor. Assemble the three aluminium poles. The head and centre aluminium poles are the longer poles and are both labelled. The foot pole is the shorter pole.

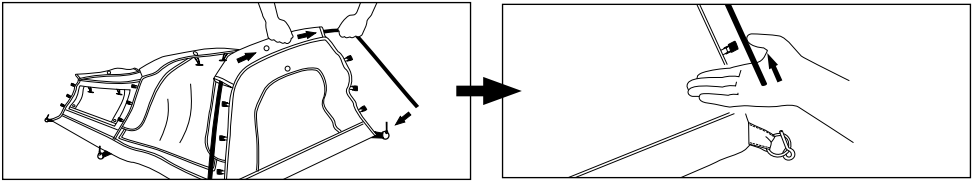
### Step 2



Feed the head pole through the sleeve on the top of the swag and insert it into one of the pins. While you support the weight of the swag with your other hand.

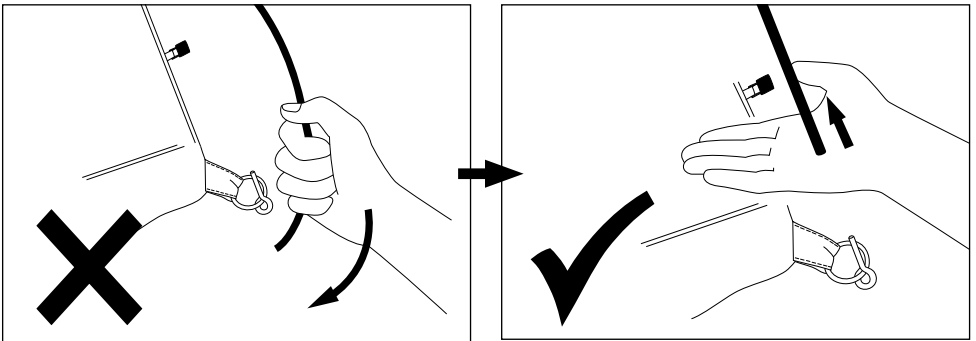
# INSTRUCTION MANUAL

## Step 3



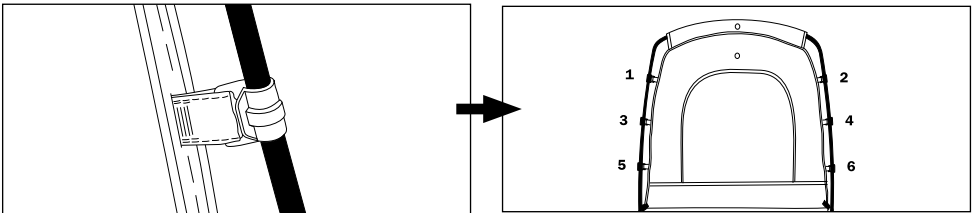
Before attempting to insert the aluminium pole into the second pin, ensure the pole sleeve is centred on the pole. Place your palm under the pole end, and push upward until there is a gap between the pole end and the second pin. Insert the second pin.

**⚠ IMPORTANT: DO NOT BEND THE POLE TO INSERT THE SECOND PIN.**

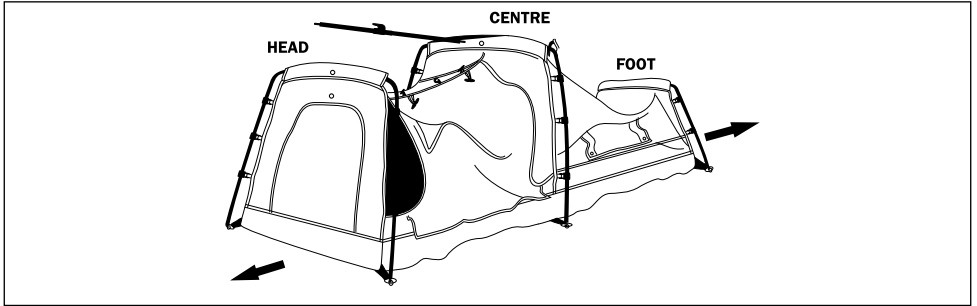


Repeat this process for the other pole whilst correcting the swag skin as you assemble.

## Step 4

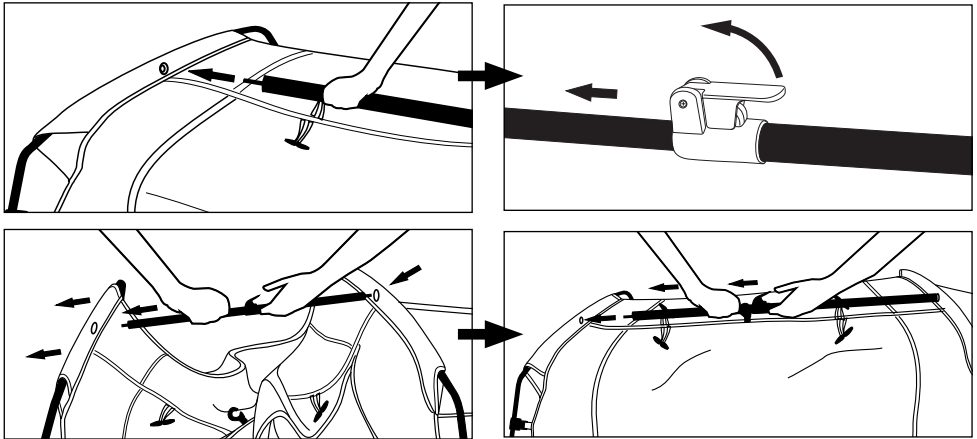


Clip the swag to the aluminium poles one end at a time. A good technique for attaching the clips is to alternate from one side to the other. Top left then top right, second left and then second right and so on.



At this point you should have all three aluminium poles assembled, located in their corresponding positions and have centralized the swag at each point. The clips should all be attached to the aluminium poles on each side. Stretch out the base of the swag to ease assembly when placing the trigger lock spreader pole.

**Step 5**



Insert the trigger lock spreader pole into the centre eyelet. Release the trigger to extend the pole and insert into the end eyelet. Tension the bar to stretch the swag into shape then lock into position and add the top clip. Peg out guy ropes at both ends, now your Outback swag set up is complete.

# INSTRUCTION MANUAL

## PACK DOWN

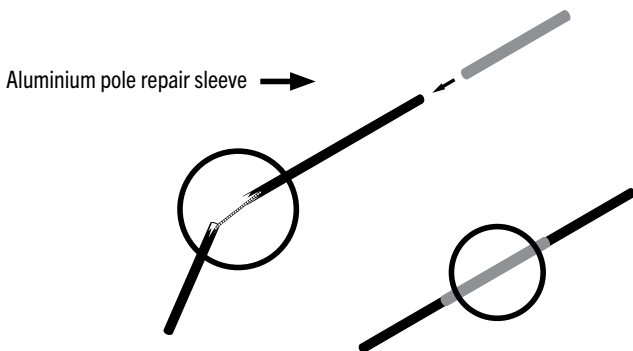
1. Partially close all the zips, door covers and window flaps, leaving them slightly open will allow for the air to escape while rolling up. Remove pegs and guy ropes if used.
2. Release the trigger of the spreader pole and remove them from the eyelets.
3. Unclip the swag from the aluminium poles one at a time.
4. Disassemble the all poles in preparation for step 5 below.
5. While the swag is laid out flat, bring any overhanging canvas and ropes into the centre of the swag. Beginning from the head end, start rolling the swag as tightly as possible in an attempt to expel as much air as possible to achieve a compact roll. Tip: Using your knees, or two people while rolling, will assist in getting the swag as compact as possible. Just before completing the rolling process, place all the disassembled poles between the fabric and continue rolling process to the end.
6. Bring the two compression straps together and loop through the double D-rings, do not over tighten the straps.

## NOTE

**Allow a wet or damp swag to dry thoroughly before pack down. If this is not possible, unroll swag a soon as possible. Allow to fully dry out before re-packing and storing.**

## REPAIR KIT

Swag poles are the bones of your swag set up. At times mishaps or bad luck can play a part when they break, ruining a great day out. We provide a swag pole sleeve for a quick and easy fix, to have your swag up and in working order.



## **SPARE PARTS LIST**

For a full list of Spare Parts available refer to [DARCHE.COM.AU](http://DARCHE.COM.AU)

## **HOW TO SEASON YOUR DARCHE SWAG**

The best way to season your swag is to set up outdoors and completely soak the exterior material of the swag with a hose. Allow the swag to dry completely. Repeat this process 2-3 times. Seasoning the swag will allow the canvas material to swell and will help to fill any stitching holes, providing an additional level of weather protection. Ensure the swag is completely dry before packing away.

## **CARE & STORAGE INSTRUCTIONS**

1. Remove dirt with a soft brush and cold water after use.
2. Do not clean with soap, detergent, petrol, oil or solvents.
3. Ensure swag is completely dry before storing.
4. Do not store directly on concrete floors. A dry shelf in your shed or a cupboard is a perfect spot for your swag when not in use.
5. If spot mould is visible, brush it off with a stiff bristle nylon brush and vacuum the area to get rid of any residual spores.
6. Leaving your swag rolled too tightly for long periods of time may result in the mattress taking a while to bounce back. If it's been a while since your last adventure, open your swag a few days before you leave and allow the mattress to expand. Re-pack your swag and have a great weekend.

# I N S T R U C T I O N M A N U A L

Designed and tested in Australia for Australian conditions.

A brand by Charles Parsons.

Telephone 1300 367 695 | Email: [info@DARCHE.com.au](mailto:info@DARCHE.com.au)

75 Heyington Avenue, Thomastown VIC 3074, Australia.

**DARCHE: LEADERS IN OUTDOOR DESIGN. PROUDLY AUSTRALIAN.**

Due to our policy of continual product development,  
the specifications, colours and features may vary.

V1-April 2021



D A R C H E . C O M . A U