

IMPORTANT:

ENSURE PLASTIC SPACERS PROTRUDE THROUGH UNDERSIDE OF DECK AND INTO BASE PLATE HOLES. IF REQUIRED, CUT PLASTIC SPACERS TO LENGTH.

SPACER LENGTH = DECK THICKNESS - 8MM

FOR DECKS LESS THAN 10MM THICK, DO NOT USE SPACERS.

ENSURE STAPLE HEIGHT DOES NOT EXCEED 24 MM ABOVE DECK.

ENSURE DECK PLATE SITS PERPENDICULAR TO STAPLE AXES.

DO NOT OVERTIGHTEN NUTS, MAX TORQUE = 7Nm

APPLY SEALANT/JOINTING COMPOUND BETWEEN THREADED COLLAR, DECK PLATE AND AND DECK.

spinlock
BE ADVENTURE-PROOF



WARNING:
IF USING AS TEMPLATE, ENSURE PRINTER SETTINGS ARE ADJUSTED TO ACCOUNT FOR THE DRAWING SCALE AND **ALWAYS** CHECK DIMENSIONS.



COPYRIGHT:
THIS DRAWING IS PROTECTED BY COPYRIGHT. ANY USE IS FORBIDDEN WITHOUT THE WRITTEN CONSENT OF SPINLOCK.

ALL DIMENSIONS IN MM

FASTENERS

WEIGHT

MAX LOAD

SCALE PAGE SIZE DATE

M6 x 2

75g

0° FROM VERTICAL, SWL = 2150KG
45° FROM VERTICAL, SWL = 1290KG
90° FROM VERTICAL, SWL = 1290KG

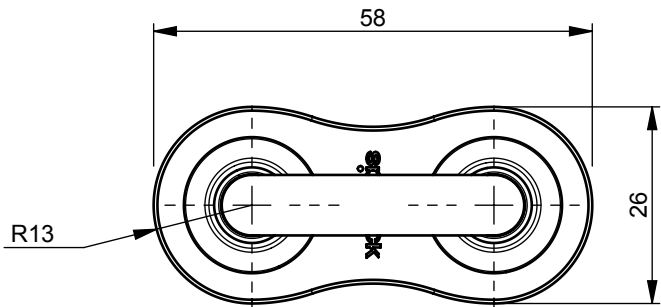
1:1

A4

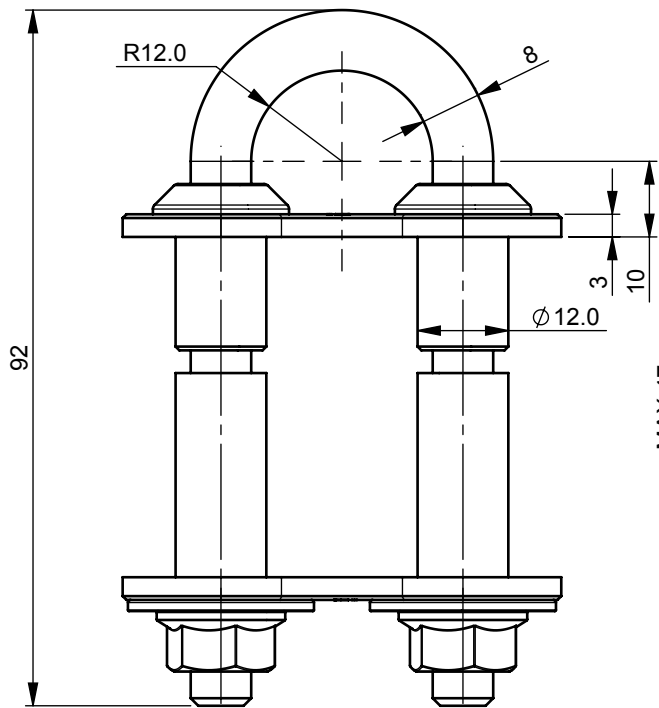
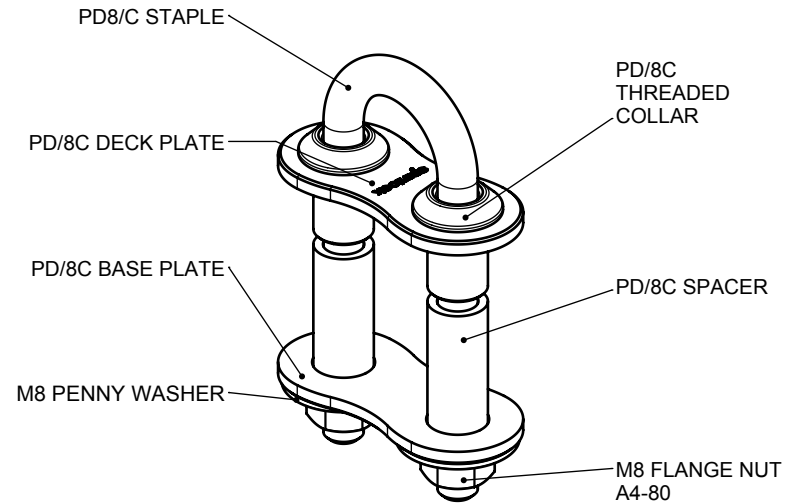
APR 2018

PD/6C

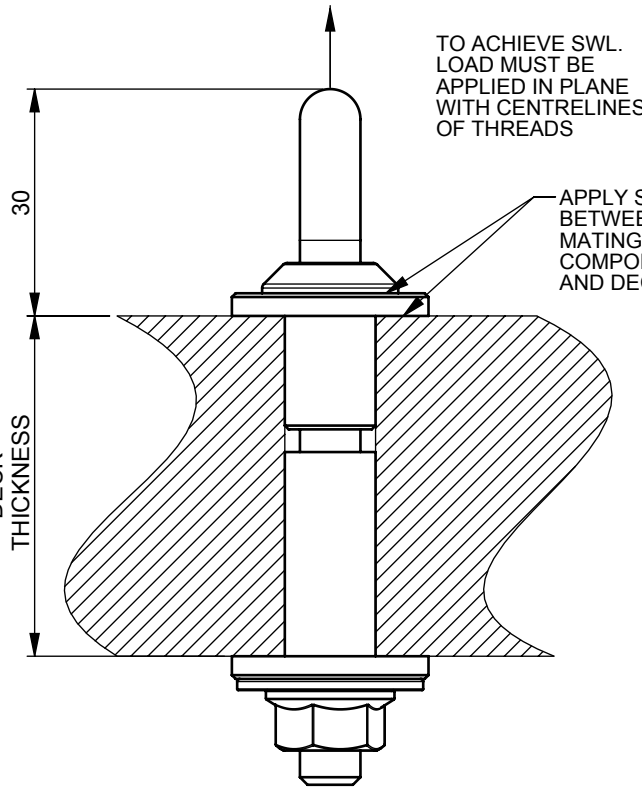
FOR MORE INFO CONTACT
SPT@SPINLOCK.CO.UK



DRILL 2 X 12.5MM HOLES ON 32.0MM CENTRES



MAX 47
MIN 13
DECK
THICKNESS



IMPORTANT:

ENSURE PLASTIC SPACERS PROTRUDE THROUGH UNDERSIDE OF DECK AND INTO BASE PLATE HOLES. IF REQUIRED, CUT PLASTIC SPACERS TO LENGTH.

SPACER LENGTH = DECK THICKNESS - 13MM

FOR DECKS LESS THAN 15MM THICK, DO NOT USE SPACER TUBES.

ENSURE STAPLE HEIGHT DOES NOT EXCEED 30MM ABOVE DECK.
ENSURE DECK PLATE SITS PERPENDICULAR TO STAPLE AXES.

DO NOT OVERTIGHTEN NUTS, MAX TORQUE = 17Nm

APPLY SEALANT/JOINTING COMPOUND BETWEEN THREADED COLLAR, DECK PLATE AND AND STAPLE.

spinlock
BE ADVENTURE-PROOF



WARNING:
IF USING AS TEMPLATE, ENSURE PRINTER SETTINGS ARE ADJUSTED TO ACCOUNT FOR THE DRAWING SCALE AND **ALWAYS** CHECK DIMENSIONS.



COPYRIGHT:
THIS DRAWING IS PROTECTED BY COPYRIGHT. ANY USE IS FORBIDDEN WITHOUT THE WRITTEN CONSENT OF SPINLOCK.

ALL DIMENSIONS IN MM

FASTENERS

WEIGHT

MAX LOAD

SCALE PAGE SIZE DATE

M8 x 2

145g

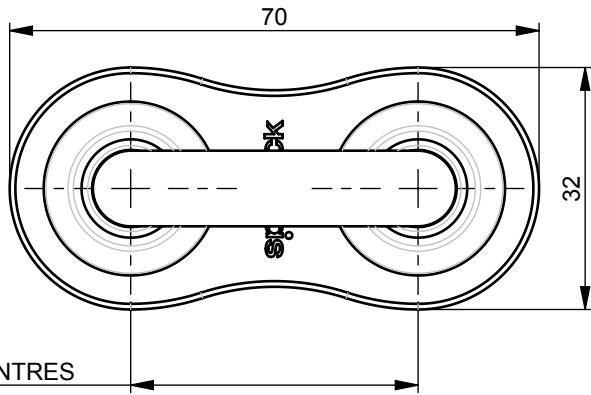
0° FROM VERTICAL, SWL = 4000KG
45° FROM VERTICAL, SWL = 2400KG
90° FROM VERTICAL, SWL = 2400KG

1:1 A4

APR 2018

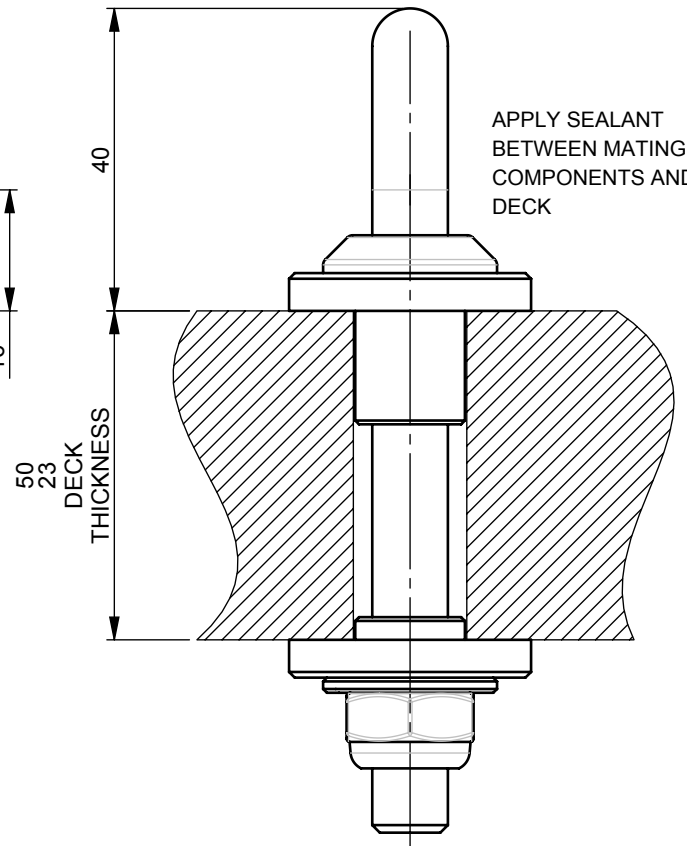
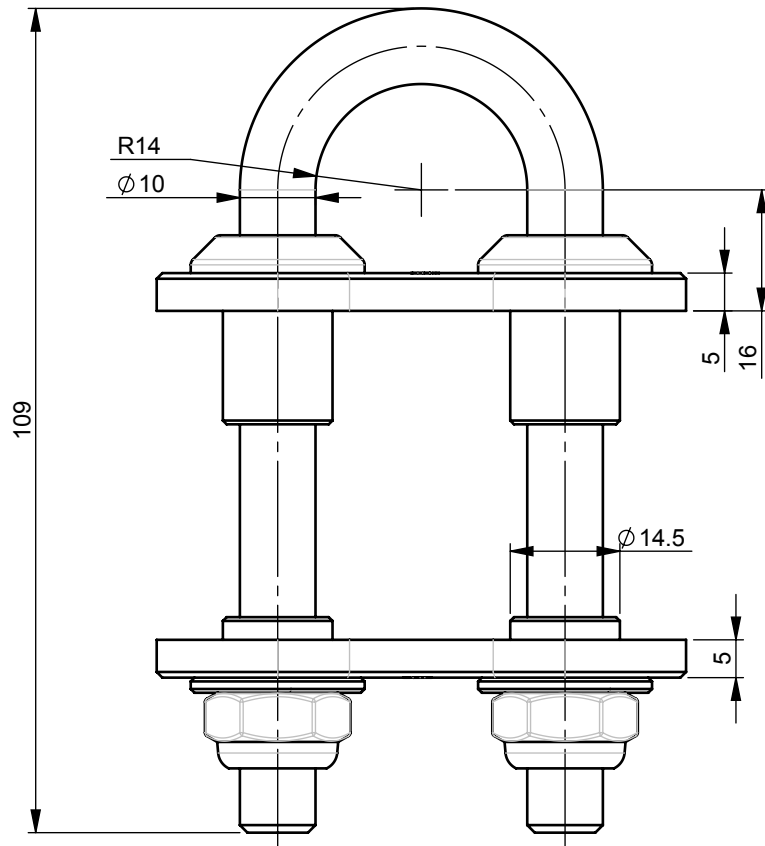
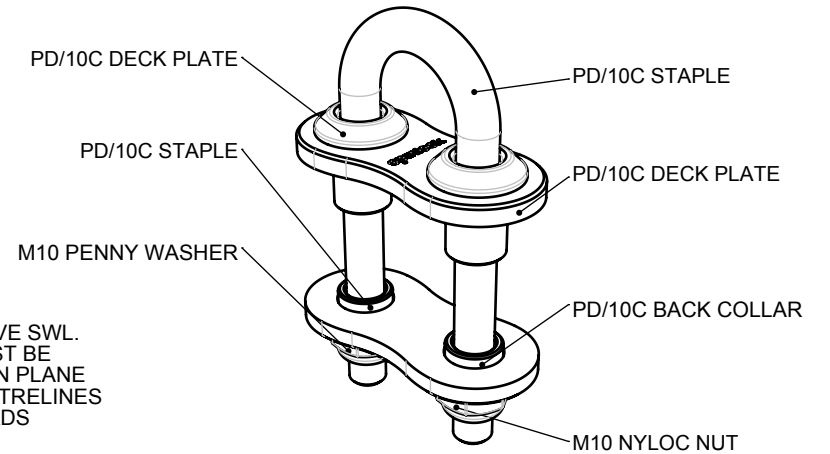
PD/8C

FOR MORE INFO CONTACT
SPT@SPINLOCK.CO.UK



DRILL 2 X 15.0MM HOLES ON 38.0 CENTRES

TO ACHIEVE SWL LOAD MUST BE APPLIED IN PLANE WITH CENTRELINES OF THREADS



IMPORTANT:

IF NECESSARY, ADJUST THREADED COLLARS TO ENSURE:

STAPLE HEIGHT DOES NOT EXCEED 40MM ABOVE DECK.

DECK PLATE SITS PERPENDICULAR TO STAPLE AXES.

DO NOT OVERTIGHTEN NUTS, MAX TORQUE = 30Nm

APPLY SEALANT/JOINTING COMPOUND BETWEEN THREADED COLLAR, DECK PLATE AND AND STAPLE.

spinlock
BE ADVENTURE-PROOF



WARNING:
IF USING AS TEMPLATE, ENSURE PRINTER SETTINGS ARE ADJUSTED TO ACCOUNT FOR THE DRAWING SCALE AND **ALWAYS** CHECK DIMENSIONS.



COPYRIGHT:
THIS DRAWING IS PROTECTED BY COPYRIGHT. ANY USE IS FORBIDDEN WITHOUT THE WRITTEN CONSENT OF SPINLOCK.

ALL DIMENSIONS IN MM

FASTENERS

WEIGHT

MAX LOAD

SCALE PAGE SIZE DATE

M10 x 2

255g

0° FROM VERTICAL, SWL = 7600KG
45° FROM VERTICAL, SWL = 5250KG
90° FROM VERTICAL, SWL = 5250KG

1:1 A4

APR 2018

PD/10C

FOR MORE INFO CONTACT
SPT@SPINLOCK.CO.UK